

A FOGGY DAY

(AS PERFORMED BY MICHAEL BUBLE)

GEORGE AND IRA GERSHWIN

♩ = c.150 ♩ = ♩[♯]

VOCALS

ALTO 1

ALTO 2

TENOR 1

TENOR 2

BARI. SAX.

TRUMPET 1

TRUMPET 2

TRUMPET 3

TRUMPET 4

TROMBONE 1

TROMBONE 2

TROMBONE 3

BASS TROMBONE

PIANO/GUITAR

BASS

DRUMS

A

3 FOG - GY DAY IN LON - DON TOWN A - MO ME LOW

STICKS SET UP SET UP SET UP **BRUSHES** (A)

Chords: G^{b7} F⁷ E⁷ E⁷ E^{b9} A^{b13} C⁷ B⁷ D^{b7} E^{b9}11 E^{b9}7/A^b D^{b6} (FILL BEHIND VOCAL) E⁷ E^{b9}7 A^{b13} D^{b6} B^{b9}7⁹

15

B

C

Vox. A - HAD ME DOWN _____ VIEWED THE MOON - ING WITH SUCH A - LARM. THE BIT - ISH MU - SE - UM HAD LOST ITS CHARM. A - HOW LONG, _____ WON - DERED _____ COULD THIS THING

ALTO 1

ALTO 2

TENOR 1

TENOR 2

BARI.

TPT. 1

TPT. 2

TPT. 3

TPT. 4

TBN. 1

TBN. 2

TBN. 3

S. TBN.

PNO./QTR. E⁹ A⁹ F#⁷ A^bu⁶ D^{b7} G^bmax⁷ C^{b9} D^bmax⁷ G^{b9} G^{b7}9^{b7} E^{b9} A^{b9} D^{b6} E⁷ E^bu⁷

BASS

DR. (3) (4)

SOLO W/ALTO
(IN BACKGROUND)

28

Vox. D

LAST? BUT THE AGE OF MIE-A - OLES - A - HAD - NY PASSED FOR SUD - DEN - LY I SAW YOU THERE AND THROUGH FOR - GY LON - DON TOWN THE SUN WAS SHIN - ING EV - EY WHERE

ALTO 1

ALTO 2

TENOR 1

TENOR 2

BARI.

TPT. 1 TIN

TPT. 2 TIN ENDSOLO

TPT. 3 TIN

TPT. 4 TIN

TBN. 1 *mp* *fp*

TBN. 2 *mp* *fp*

TBN. 3 *mp* *fp*

S. TBN. *mp* *fp*

PNO./GTR. *A^{b13}* *D^{b6}* *B^{b7b5}* *E^{b7}* *A^{b9}* *A^{b7}* *D^{b7b9}* *G^{b6}* *C^{b9}* *D^b/A^b* *B^{b7}* *E^{b9}* *E^{b7}/A^b* *A^{b9}*

BASS

DR. (4) (3) Snare (SIDE CYM.)

41 **E**

Vox. **F**

A FOG - GY DAY. IN LON-DON TOWN A - HAD ME

ALTO 1 *mp cresc* *f* *mp*

ALTO 2 *mp cresc* *f* *mp*

TENOR 1 *mp cresc* *f* *mp*

TENOR 2 *mp cresc* *f* *mp*

BARI. *mp cresc* *f* *mp*

TPT. 1 **OPEN** *mf cresc* *ff* LONG FALL UNIS *mp*

TPT. 2 **OPEN** *mf cresc* *ff* LONG FALL UNIS *mp*

TPT. 3 **OPEN** *mf cresc* *ff* LONG FALL UNIS *mp*

TPT. 4 **OPEN** *mf cresc* *ff* LONG FALL UNIS *mp*

TBN. 1 *mf cresc* *ff* LONG FALL *mp*

TBN. 2 *mf cresc* *ff* LONG FALL *mp*

TBN. 3 *mf cresc* *ff* LONG FALL *mp*

S. TBN. *mf cresc* *ff* LONG FALL *mp*

PNO./GTR. *mp cresc* *f* *F#7* *F#7/Bb* *Ebmaj9* *Gb9* *F#7* *bb9* *Eb6*

BASS *mp cresc* *f*

DR. *mp cresc* (RIMSHOT) (A) FILL

67

VOX. *COULD THIS THING LAST? BUT THE AGE OF MIR-A CLES... HAD - NT PASSED. FOR SUO - DEN - LY I SAW YOU THERE... AND IN A FOG - - GY LON - DON TOWN THE*

ALTO 1

ALTO 2

TENOR 1

TENOR 2

BARI.

TPT. 1 *fp* UNIS *mp*

TPT. 2 *fp* UNIS *mp*

TPT. 3 *fp* UNIS *mp*

TPT. 4 *fp* UNIS *mp*

TBN. 1 *fp* *mp*

TBN. 2 *fp* *mp*

TBN. 3 *fp* *mp*

S. TBN. *fp* *mp*

PNO./GTR. *fp* *mp*
E^{nat} F^{nat} B⁷ E^b D^b E^b C⁷₉ A^b C⁷₉ F³ E³ F³ B⁷₉AUG E^b E⁷ A^b D⁹ E^b E⁷/D D⁹₉ C⁷

BASS

DR. *SET UP*

80

VOX. SUN WAS SHIN - ING. EV - - EV - WHERE

ALTO 1

ALTO 2

TENOR 1

TENOR 2

BARI.

TPT. 1

TPT. 2

TPT. 3

TPT. 4

TBN. 1

TBN. 2

TBN. 3

S. TBN.

PNO./GTR. B^b7 E^b/G $F^{#11}$ $F^#7$ $F^#7/B^b$ E^b A^b/E^b E^b A^b/E^b F^b B^b $SOLO B^b$ $STRAIGHT 16$ E^b E D E^b

BASS

DR. SET UP FILL

VOCALS

A FOGGY DAY

(AS PERFORMED BY MICHAEL BUBLE)

GEORGE AND IRA GERSHWIN

♩ = c.150

8 **A**

A FOG - GY DAY IN LON - DON TOWN

13

A - HAD ME LOW A - HAD ME DOWN

17 **B**

I VIEWED THE MORN - ING WITH SUCH A - LARM.

21

THE BRIT - ISH MU - SE - UM HAD LOST ITS CHARM.

25 **C**

A - HOW LONG, I WON - DERED COULD THIS THING LAST? BUT THE

29

AGE OF MIR - A - CLES A - HAD - N'T PASSED FOR

33 **D**

SUD - DEN - LY I SAW YOU THERE. AND THROUGH

37

FOG - GY LON - DON TOWN THE SUN WAS SHIN - ING EV - 'RY - WHERE.

www.eightmusicbigbandcharts.co.uk

COPYRIGHT © 1937 GEORGE GERSHWIN MUSIC/IRA GERSHWIN MUSIC/WARNER BROS. MUSIC CORP. USA
WARNER/CHAPPELL MUSIC LTD, LONDON W6 8BS

VOCALS 2

41 **E** **7** **F**
 A FOG - GY DAY, IN LON-DON TOWN

53 **G**
 A - HAD ME LOW, A - HAD ME DOWN 3 I VIEWED

58
 THE MORN - ING WITH SUCH A - LARM, THE OLD BRIT-ISH MU -

62
 SE - UM HAD LOST ITS CHARM. HOW LONG

65 **H**
 I WON - DERED, COULD THIS THING LAST? BUT THE

69 3 3
 AGE OF MIR - A - CLES HAD - N'T PASSED. FOR

73 **I**
 SUD-DEN-LY I SAW YOU THERE AND IN A FOG - GY LON - DON TOWN

79
 THE SUN WAS SHIN - ING

84 OFF ON 3 4
 EV - - 'RY - WHERE

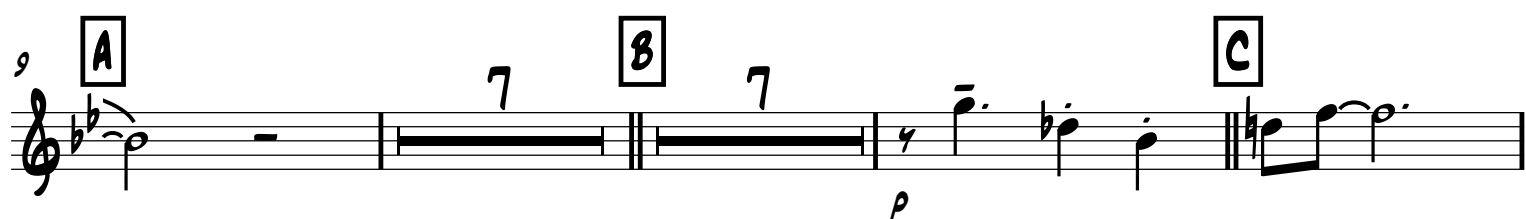
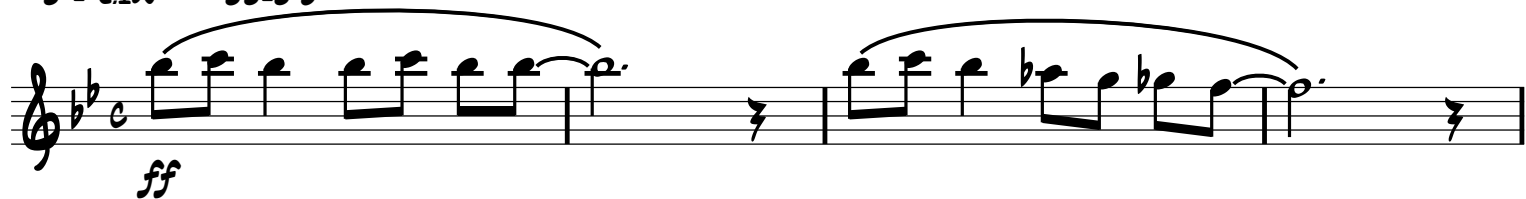
ALTO 1

A FOGGY DAY

(AS PERFORMED BY MICHAEL BUBLE)

GEORGE AND IRA GERSHWIN

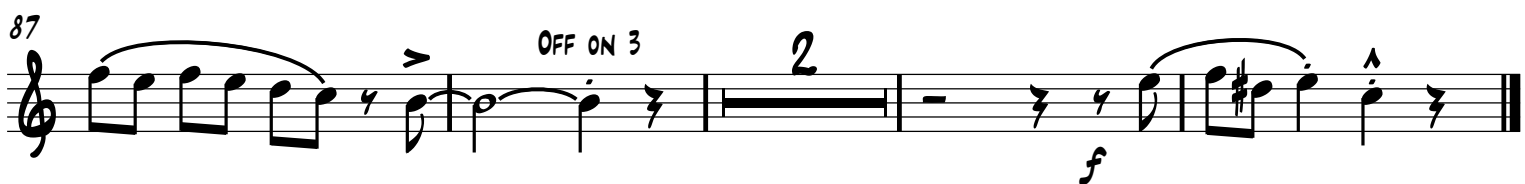
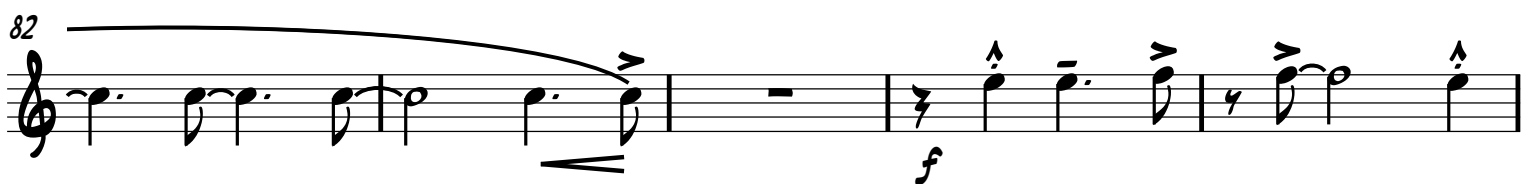
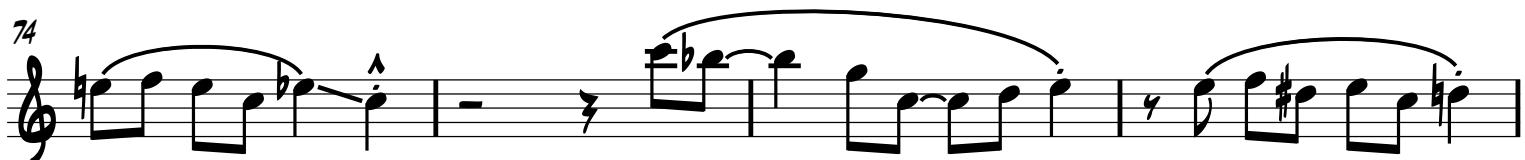
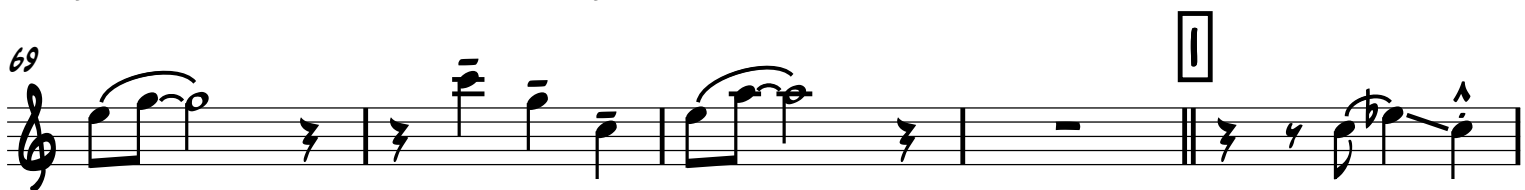
♩ = c.150



www.eightmusicbigbandcharts.co.uk

COPYRIGHT © 1937 GEORGE GERSHWIN MUSIC/IRA GERSHWIN MUSIC/WARNER BROS. MUSIC CORP. USA
WARNER/CHAPPELL MUSIC LTD, LONDON W6 8BS

ALTO 1
2



A FOGGY DAY
(AS PERFORMED BY MICHAEL BUBLE)

♩ = c.150 ♪ = ♩

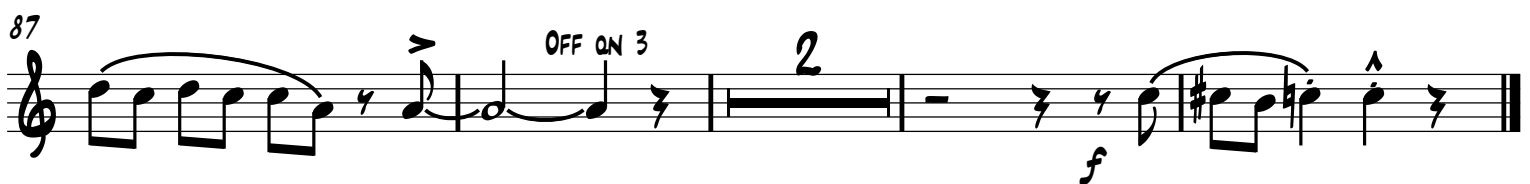
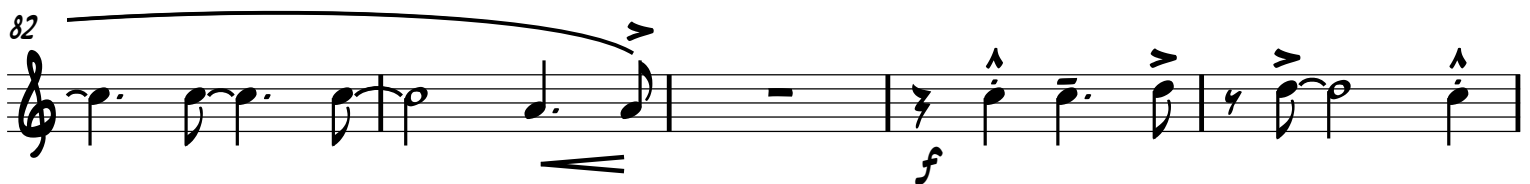
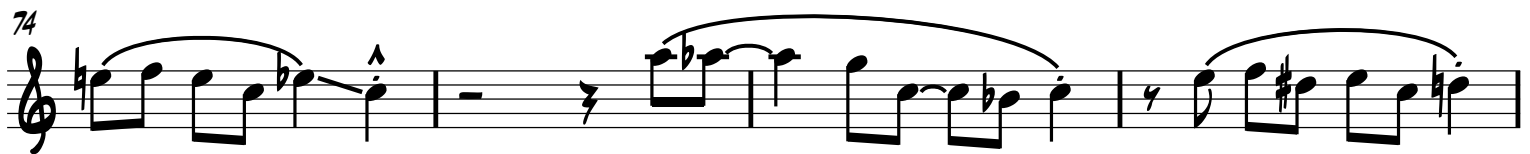
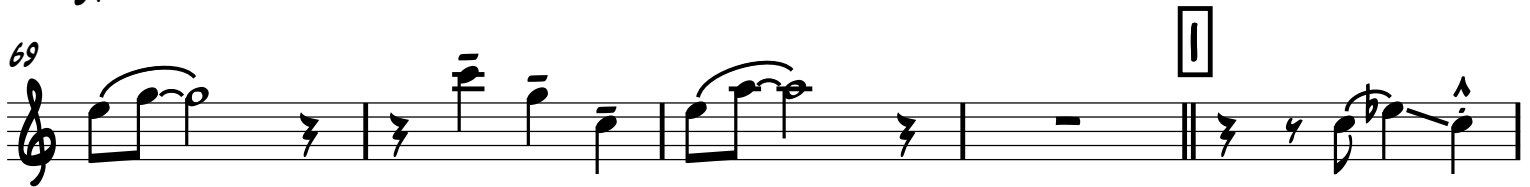
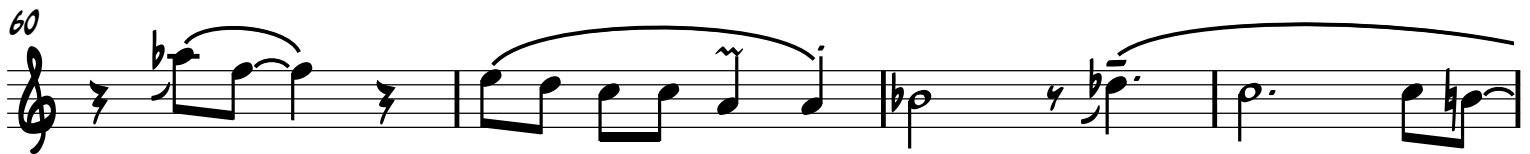
48

F

f

mp

ALTO 2
2



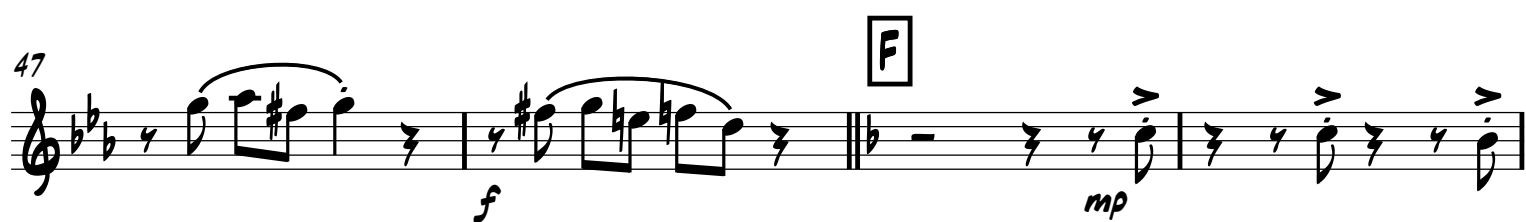
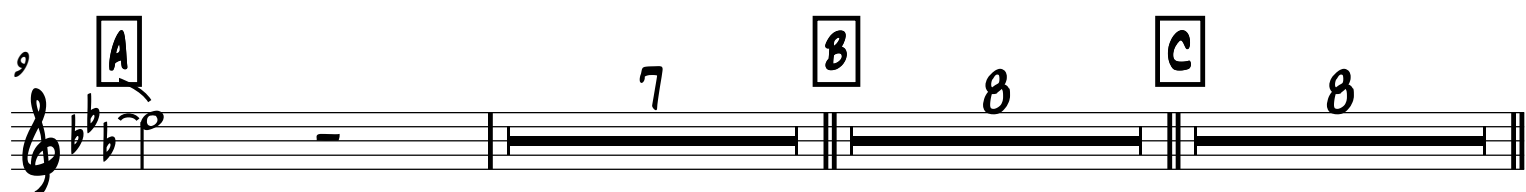
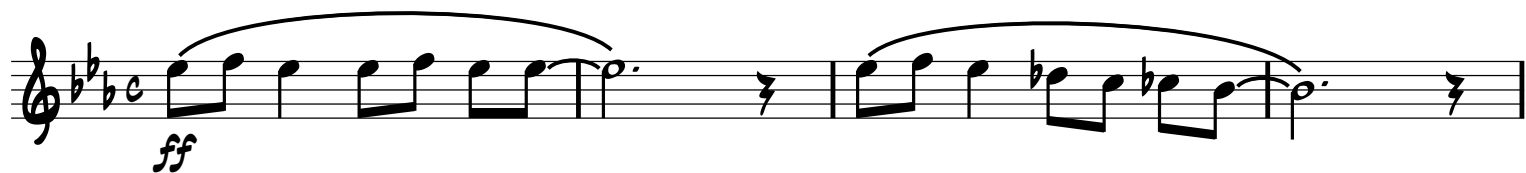
TENOR 1

A FOGGY DAY

(AS PERFORMED BY MICHAEL BUBLE)

GEORGE AND IRA GERSHWIN

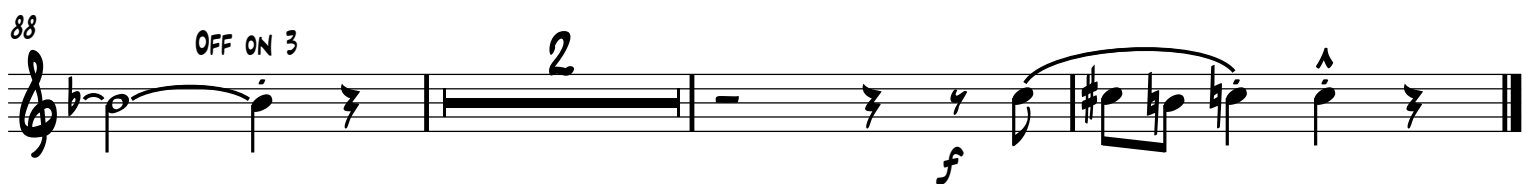
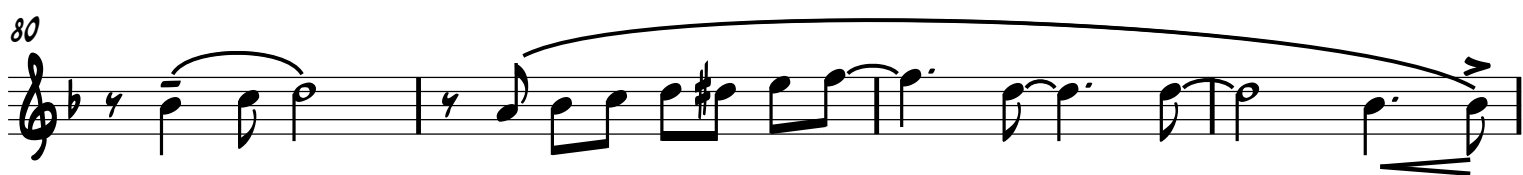
♩ = c.150 ♩ = $\frac{3}{4}$



www.eightmusicbigbandcharts.co.uk

COPYRIGHT © 1937 GEORGE GERSHWIN MUSIC/IRA GERSHWIN MUSIC/WARNER BROS. MUSIC CORP. USA
WARNER/CHAPPELL MUSIC LTD, LONDON W6 8BS

TENOR 1
2



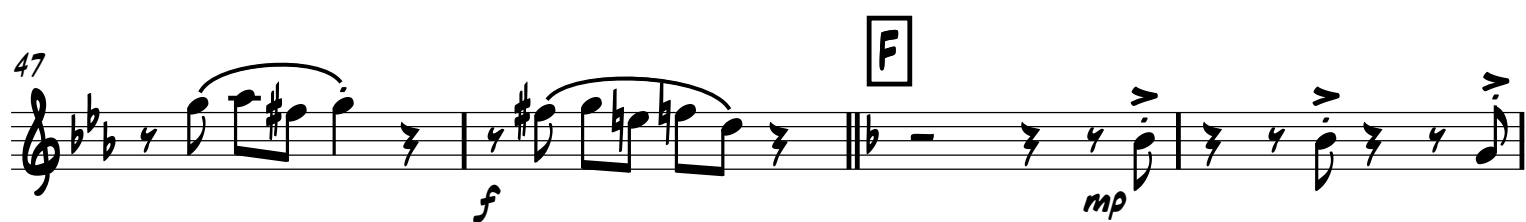
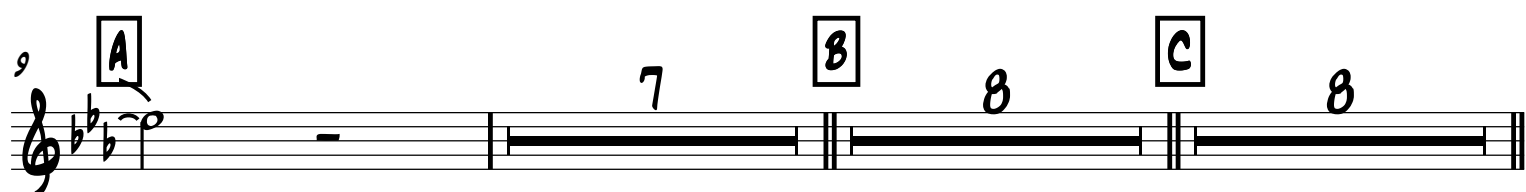
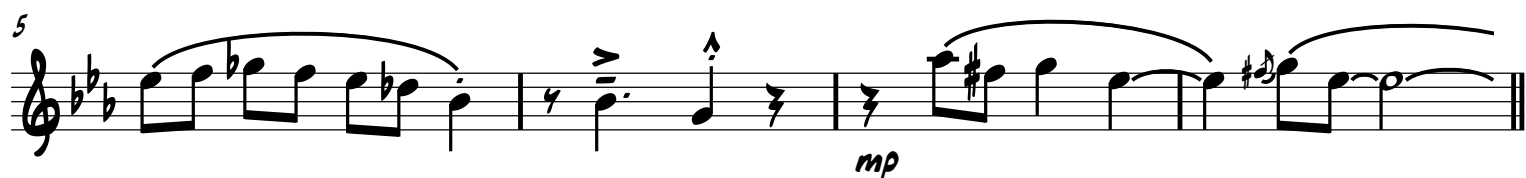
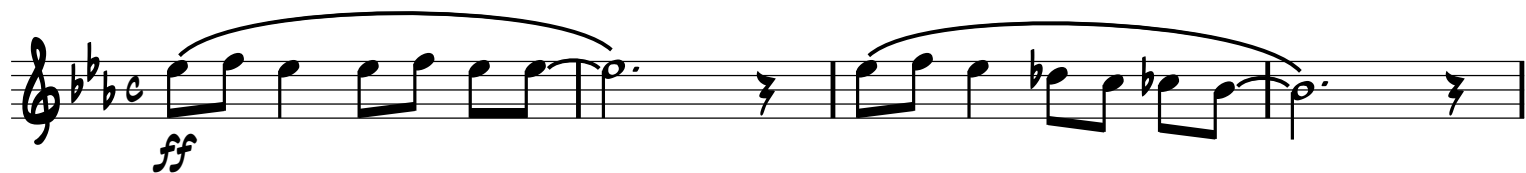
TENOR 2

A FOGGY DAY

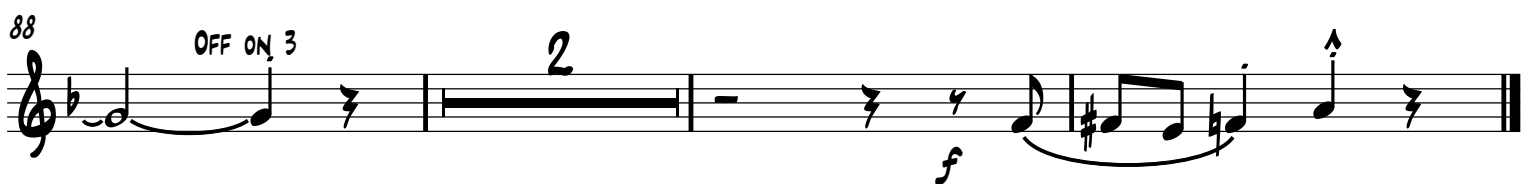
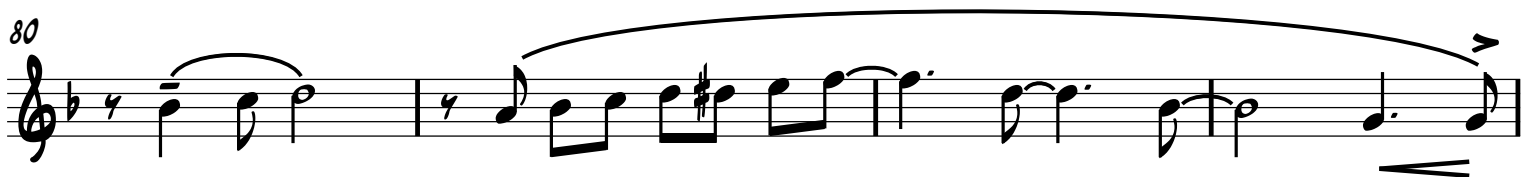
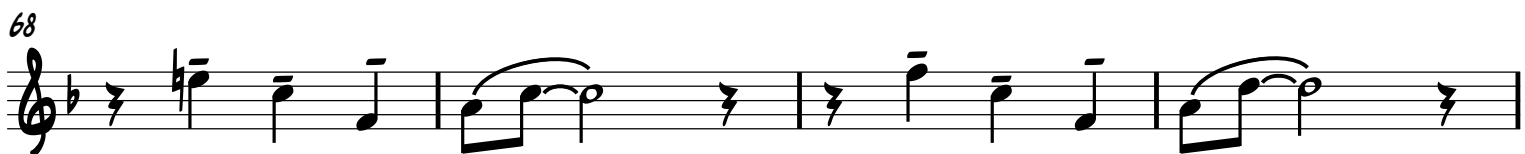
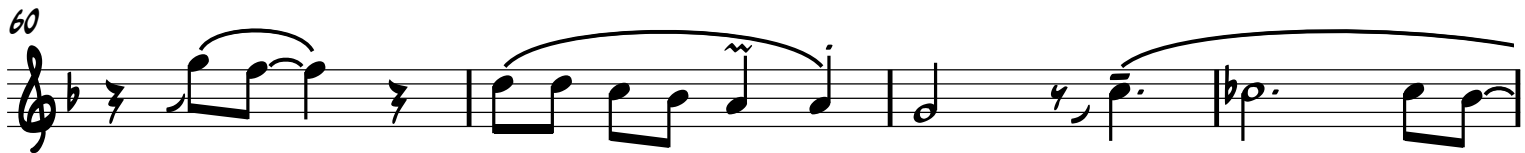
GEORGE AND IRA GERSHWIN

(AS PERFORMED BY MICHAEL BUBLE)

♩ = c.150



TENOR 2
2



A FOGGY DAY

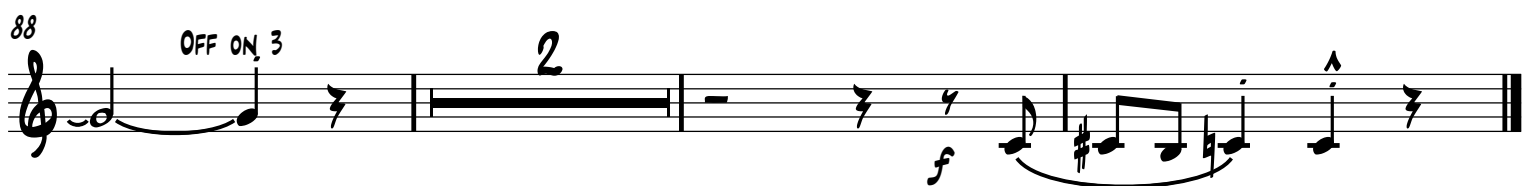
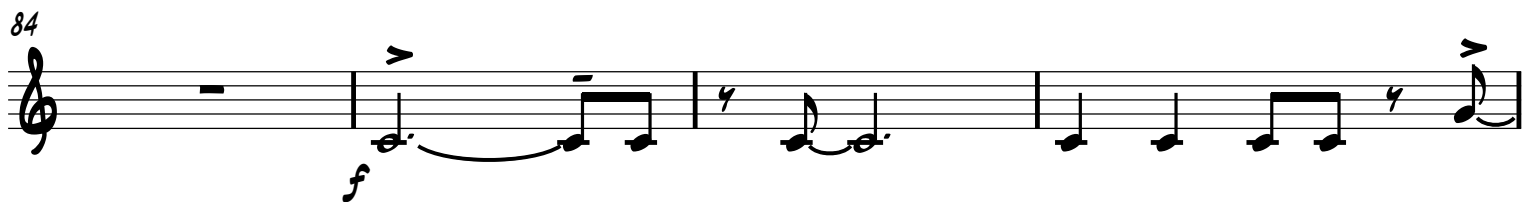
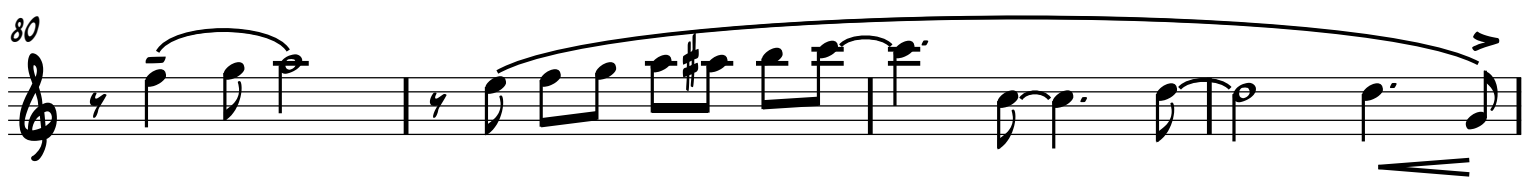
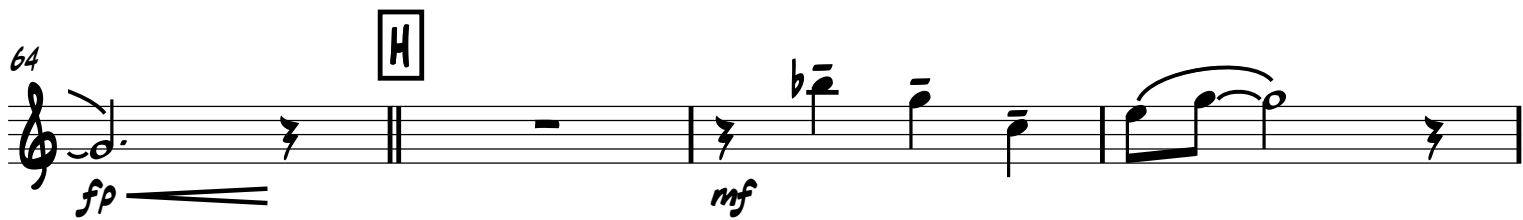
(AS PERFORMED BY MICHAEL BUBLE)

♩ = c.150

5 *ff*

17 *mp* **B** *cresc.* **C** **D** **E** **F** **G**

BARI SAX
2



OFF ON 3

2

TRUMPET 1

A FOGGY DAY

GEORGE AND IRA GERSHWIN

♩ = 150

(AS PERFORMED BY MICHAEL BUBLE)

ff

5

fp

17

8

C

8

33

D

4

TIN

mp

41

E

3

OPEN

mf CRESC.

46

F

LONG FALL UNIS.

mp

54

G

6

64

H

fp

68

72 UNIS

76 *mp*

80

84 *f* *fp*

88 OFF ON 3 2

This musical score for Trumpet 1 spans measures 72 to 88. The key signature has one flat (B-flat). Measure 72 begins with a 'UNIS' instruction and a repeat sign. Measures 73-75 contain a melodic line with a slur. Measure 76 has a rest followed by a note with an accent, marked *mp*. Measures 77-79 continue the melodic line with slurs. Measure 80 starts with a rest and a note with an accent. Measures 81-83 continue the melodic line with slurs. Measure 84 has a rest followed by notes with accents, marked *f* and *fp*. Measures 85-87 continue the melodic line with slurs. Measure 88 begins with a rest, followed by a measure with a '2' above it, and then notes with accents, marked *f*. The score ends with a double bar line.

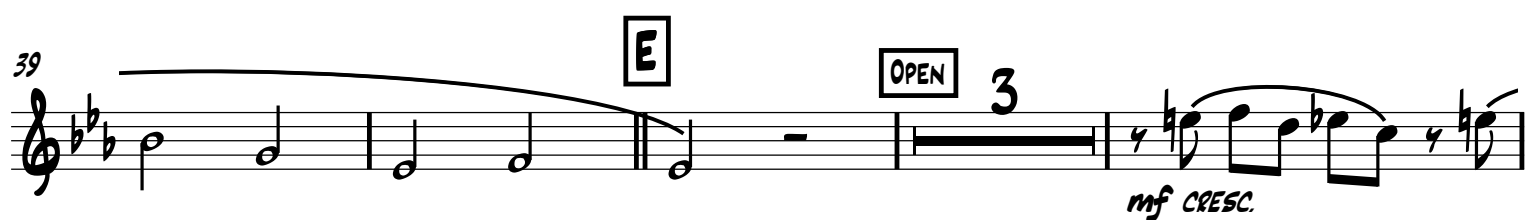
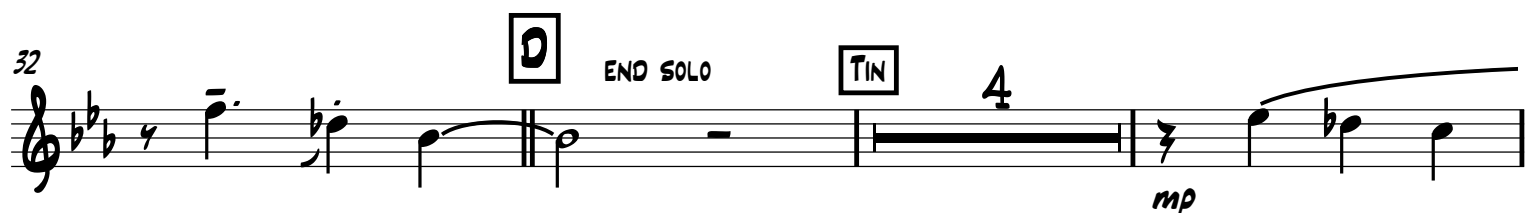
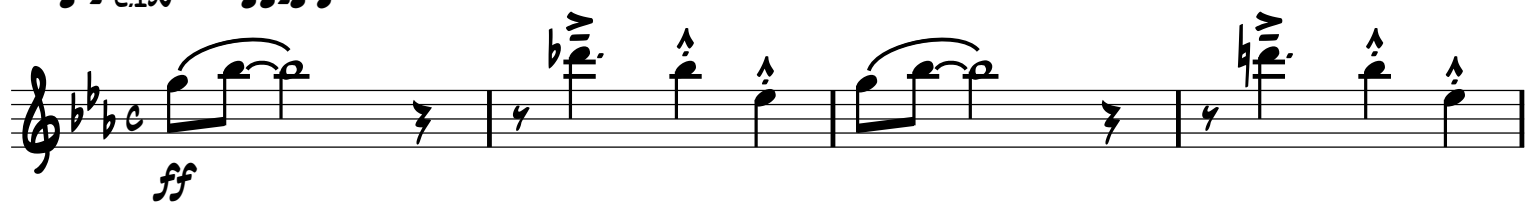
TRUMPET 2

A FOGGY DAY

(AS PERFORMED BY MICHAEL BUBLE)

GEORGE AND IRA GERSHWIN

$\text{♩} = \text{c.150}$ $\text{♩} = \text{♩}^{\frac{3}{2}}$



www.eightmusicbigbandcharts.co.uk

COPYRIGHT © 1937 GEORGE GERSHWIN MUSIC/IRA GERSHWIN MUSIC/WARNER BROS. MUSIC CORP. USA
WARNER/CHAPPELL MUSIC LTD, LONDON W6 8BS

TRUMPET 2
2

54 G 6

64 H

68

72 UNIS I

76 mp

80

84 f fp

88 OFF ON 3 2 f

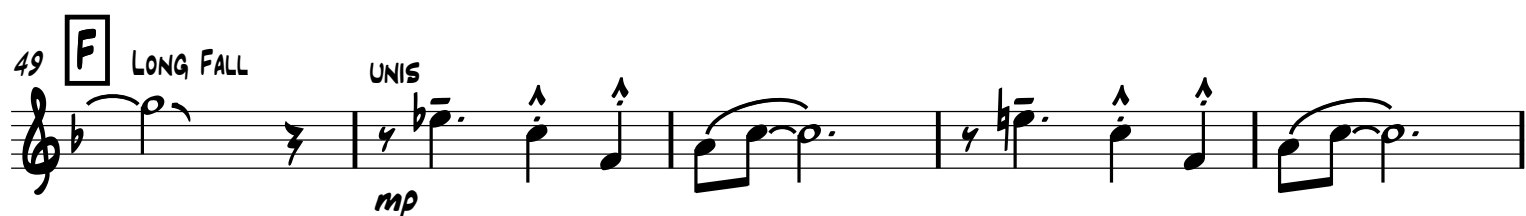
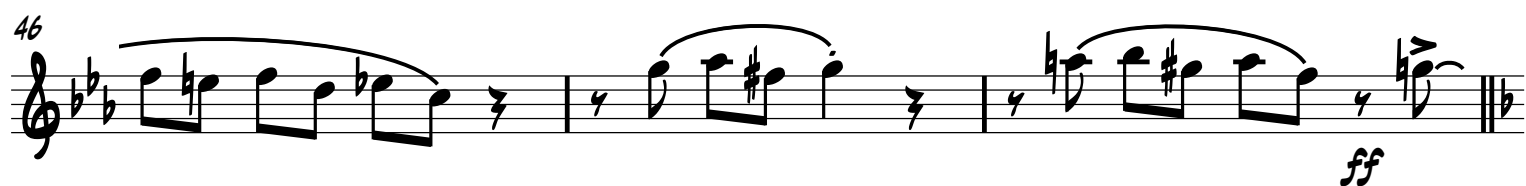
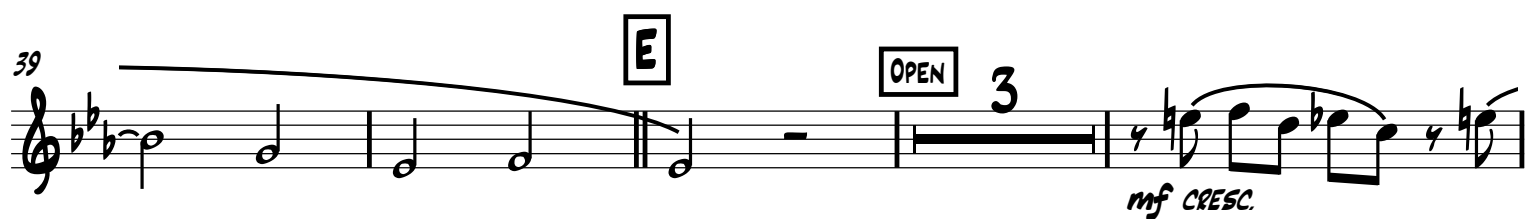
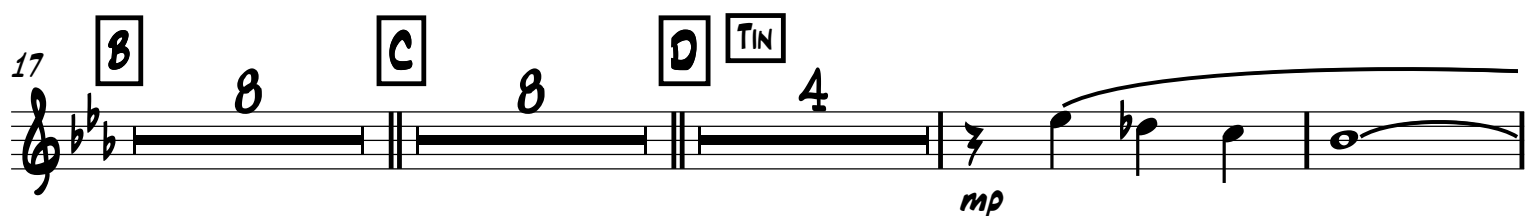
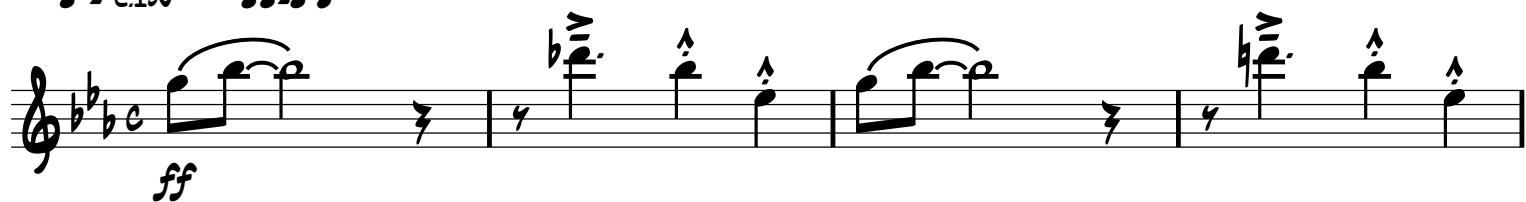
TRUMPET 3

A FOGGY DAY

(AS PERFORMED BY MICHAEL BUBLE)

GEORGE AND IRA GERSHWIN

♩ = c.150 ♩=♩³



TRUMPET 3
2

64

H

fp *f* *fp* *fp*

68

fp *f* *fp* *fp*

72

UNIS

I

fp *f* *fp* *fp*

76

mp

mp

80

fp *f* *fp* *fp*

84

f *fp*

f *fp*

88

OFF ON 3

2

f

f

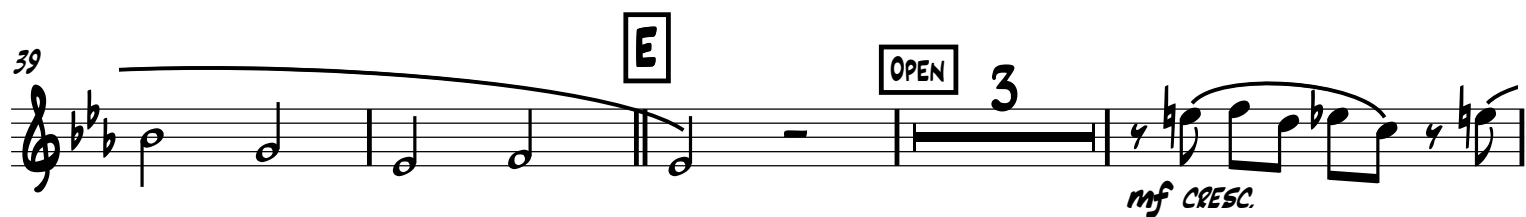
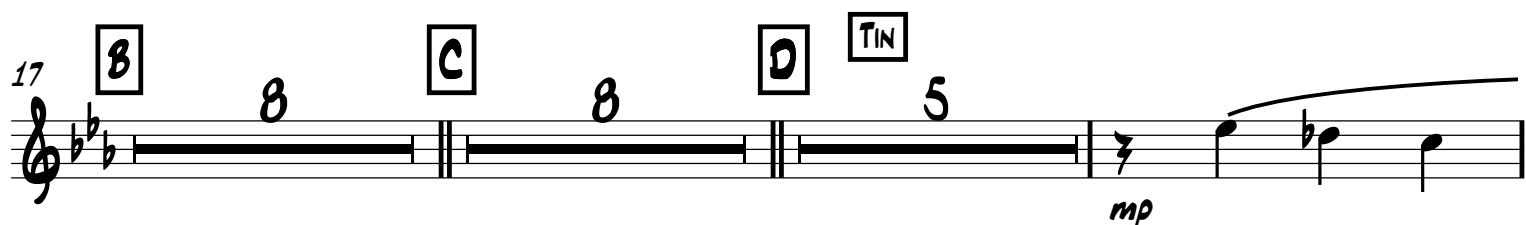
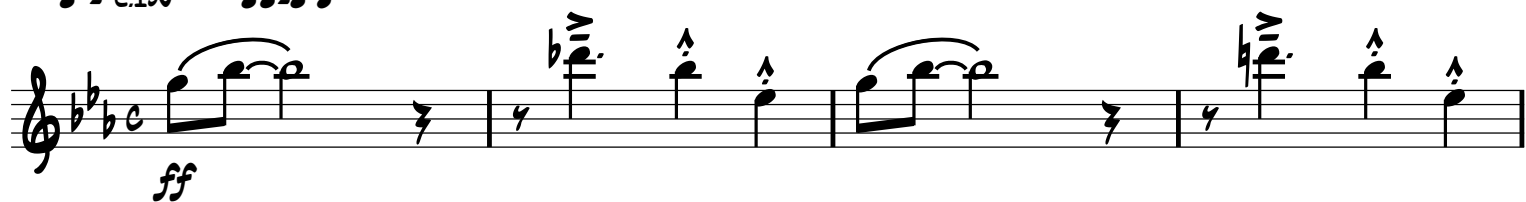
TRUMPET 4

A FOGGY DAY

(AS PERFORMED BY MICHAEL BUBLE)

GEORGE AND IRA GERSHWIN

♩ = c.150 ♩ = $\frac{3}{4}$



TRUMPET 4
2

64

H

fp *f* *fp* *fp*

68

fp *f* *fp* *fp*

72

UNIS

I

fp *f* *fp* *fp*

76

mp

fp *f* *fp* *fp*

80

fp *f* *fp* *fp*

84

f *fp*

fp *f* *fp* *fp*

88

OFF ON 3

2

f

fp *f* *fp* *fp*

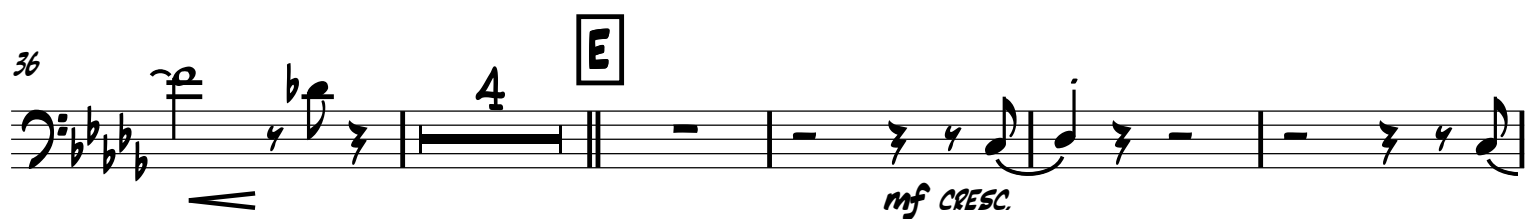
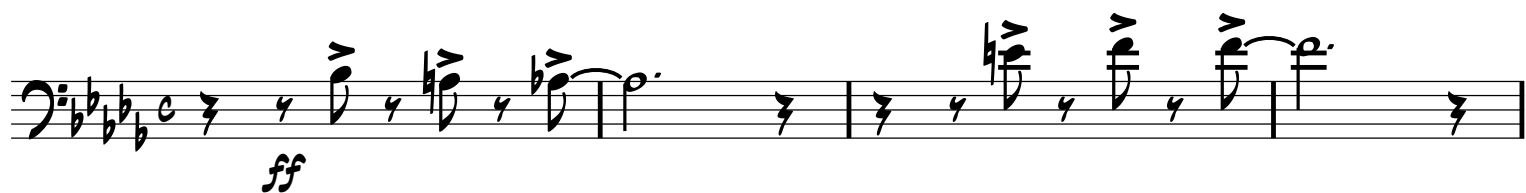
TROMBONE 1

A FOGGY DAY

(AS PERFORMED BY MICHAEL BUBLE)

GEORGE AND IRA GERSHWIN

♩ = c.150

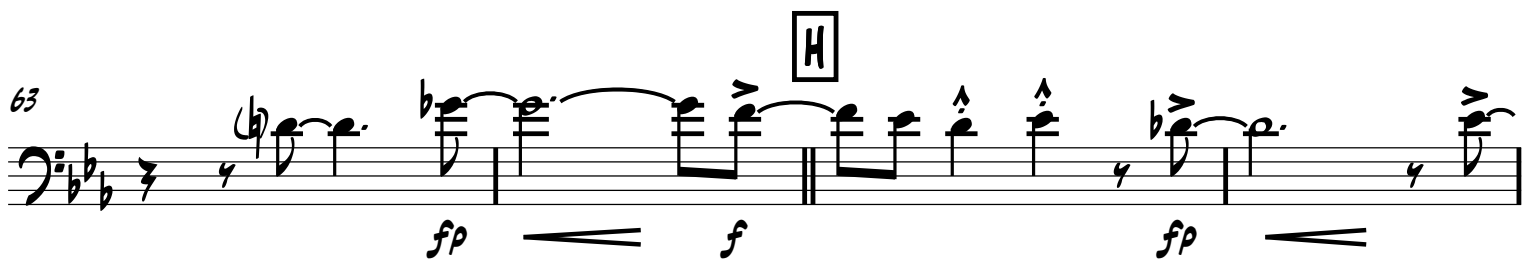


TROMBONE 1
2

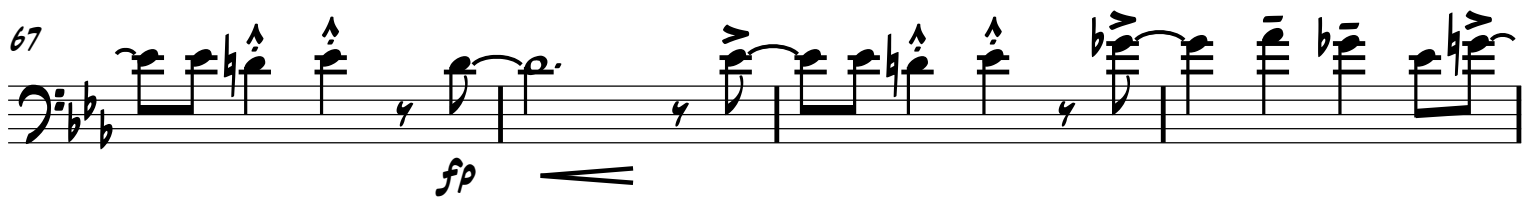
58



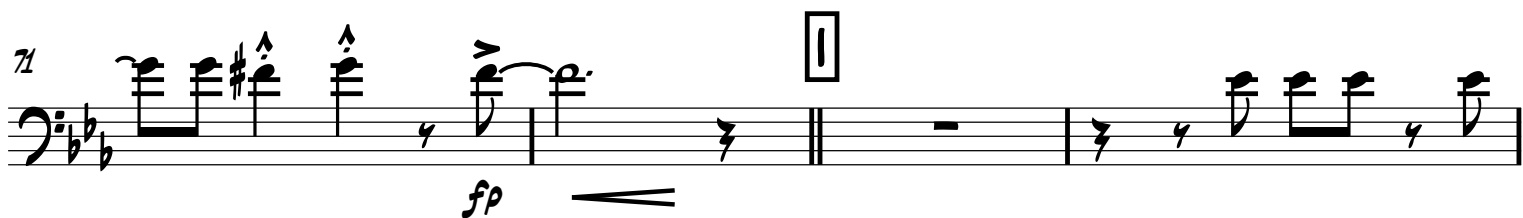
63



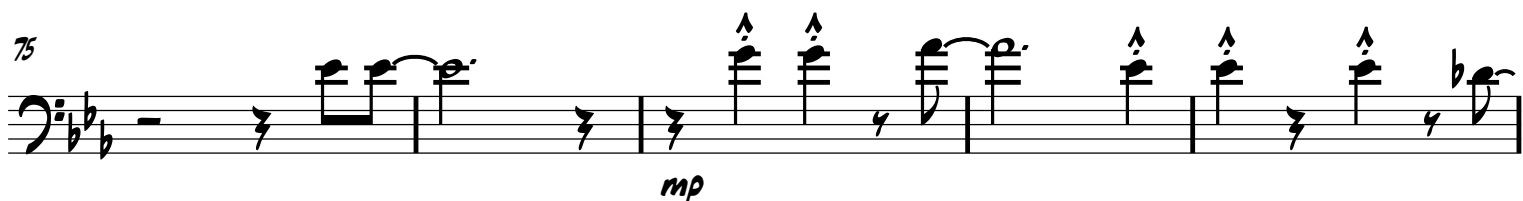
67



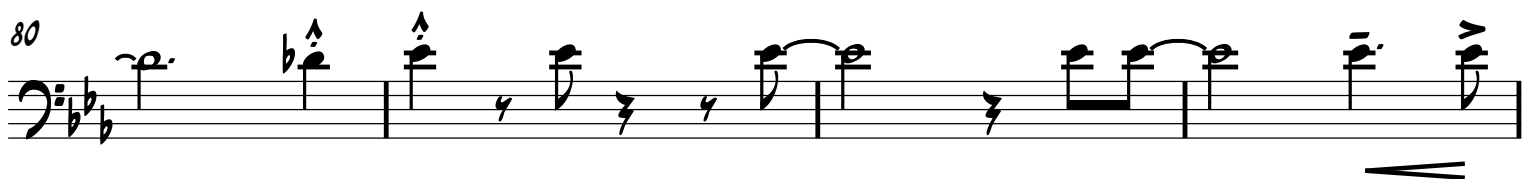
71



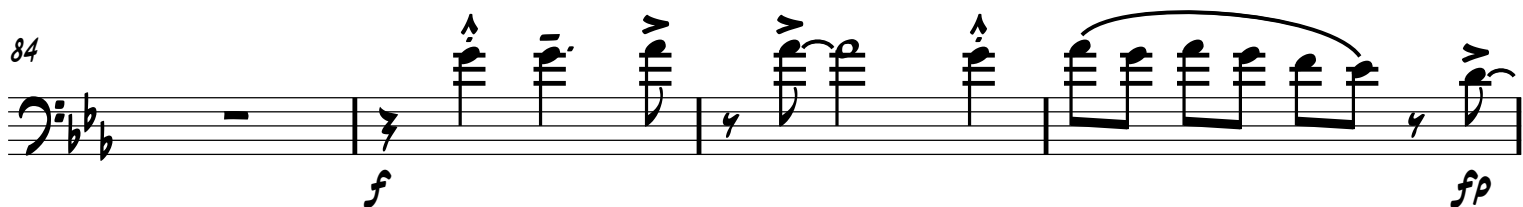
75



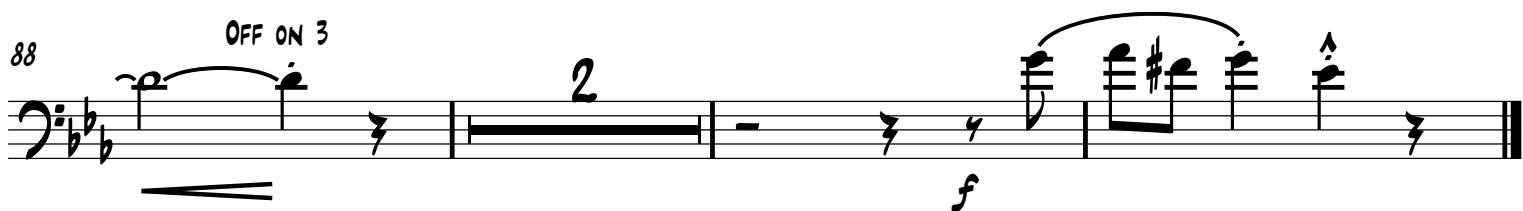
80



84



88



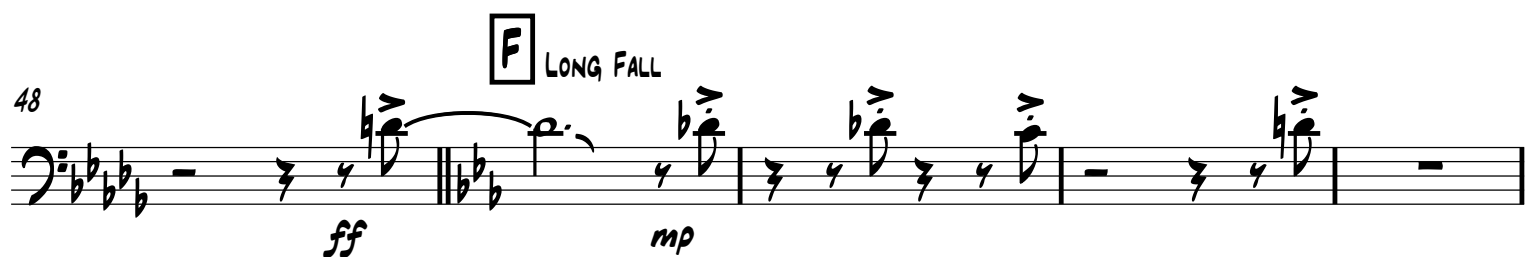
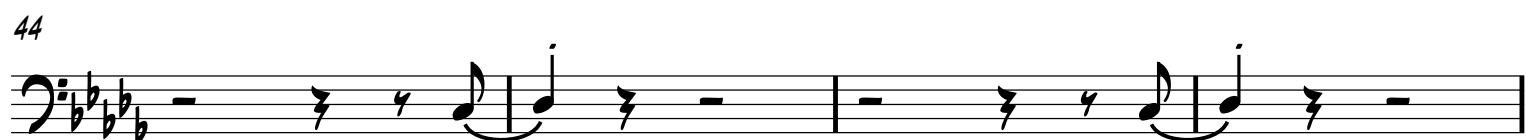
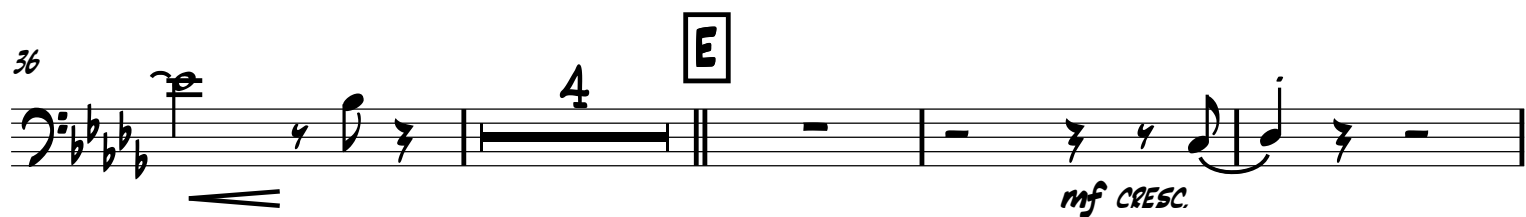
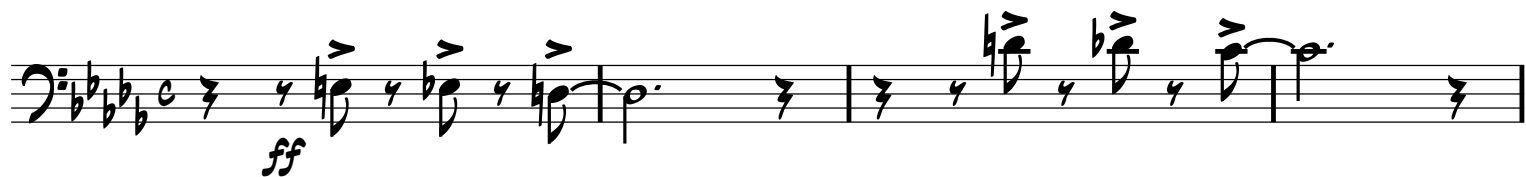
TROMBONE 2

A FOGGY DAY

(AS PERFORMED BY MICHAEL BUBLE)

GEORGE AND IRA GERSHWIN

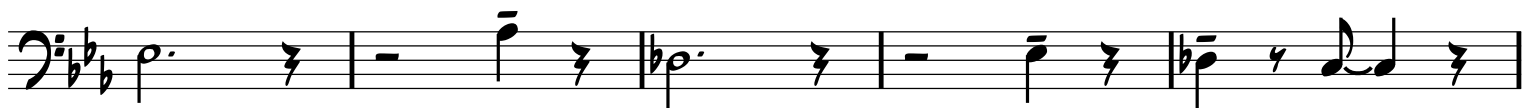
♩ = c.150



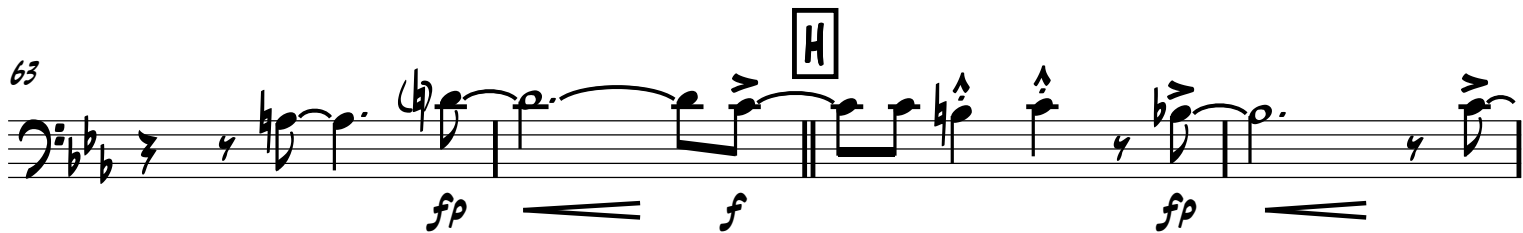
TROMBONE 2

2

58



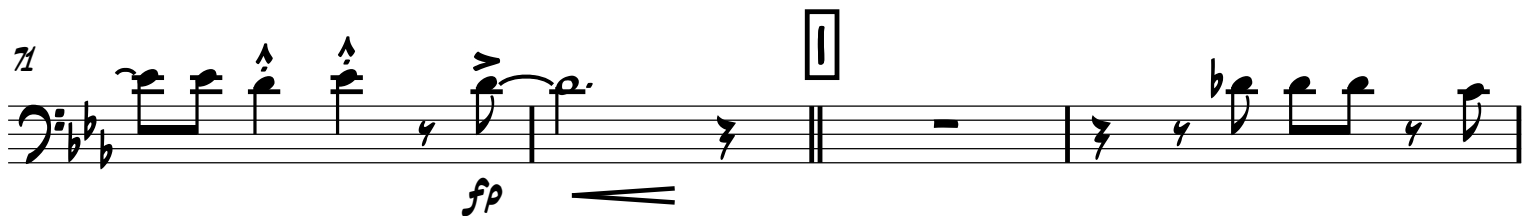
63



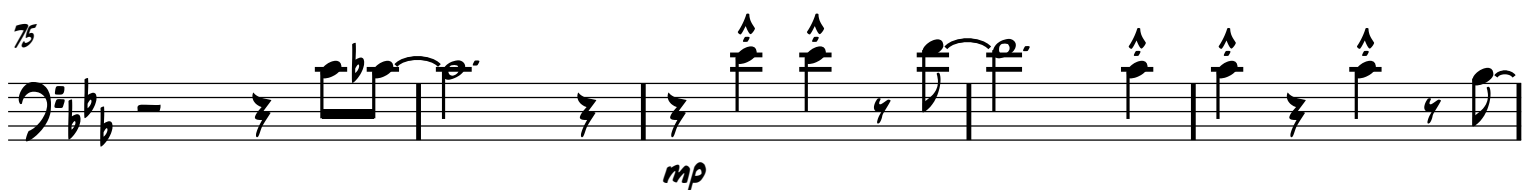
67



71



75



80



84



88



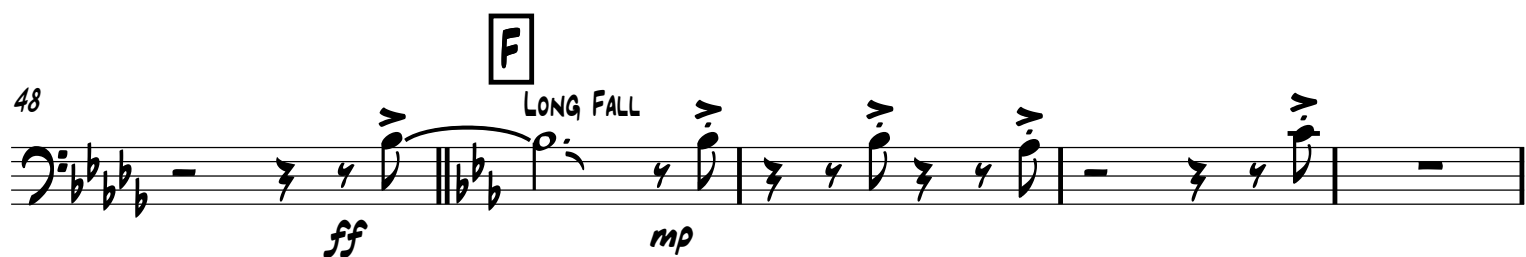
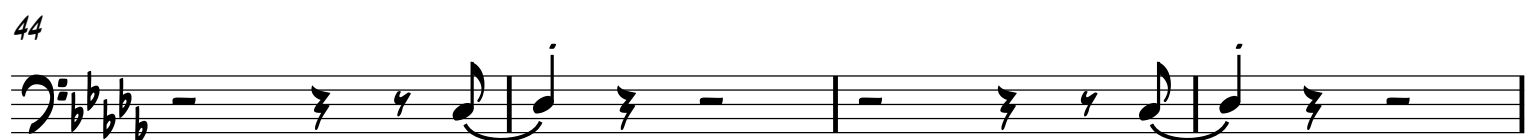
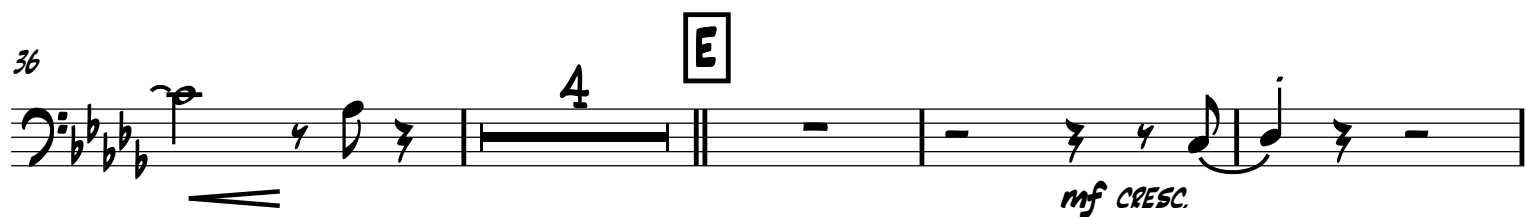
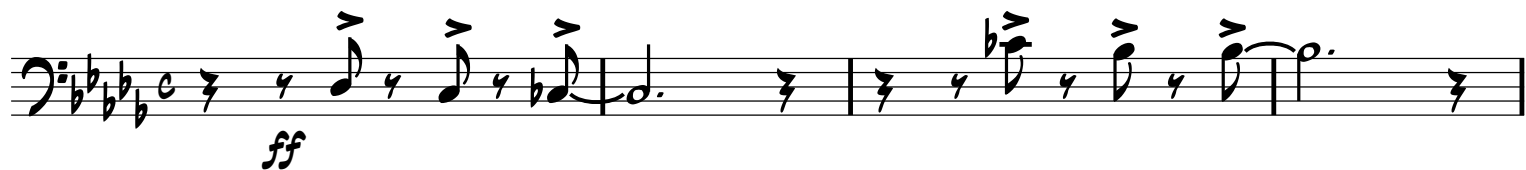
TROMBONE 3

A FOGGY DAY

(AS PERFORMED BY MICHAEL BUBLE)

GEORGE AND IRA GERSHWIN

♩ = c.150 ♩=♩♩

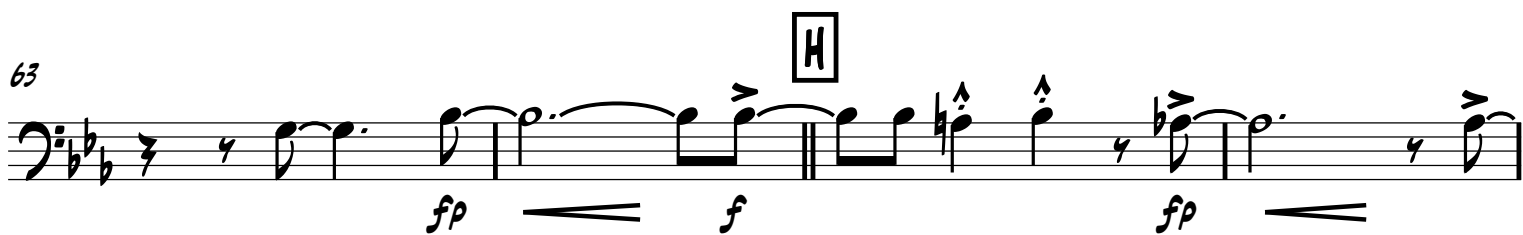


TROMBONE 3
2

58



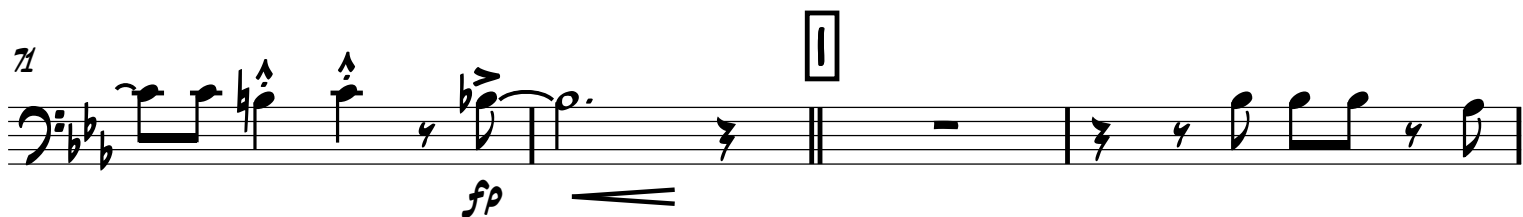
63



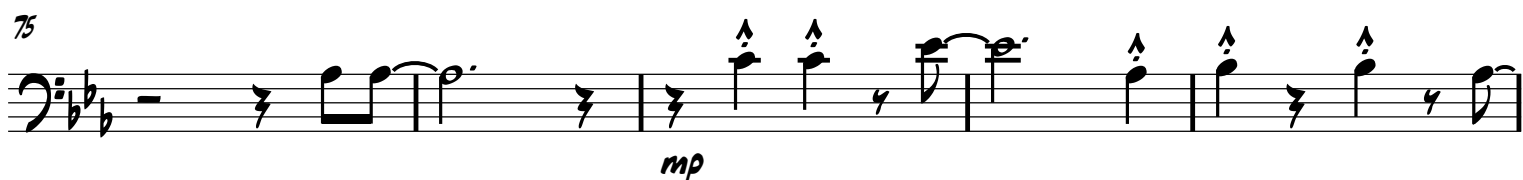
67



71



75



80

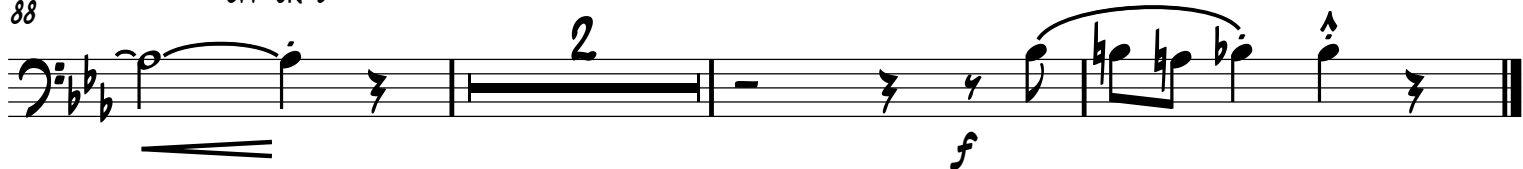


84



88

OFF ON 3




BASS TROMBONE

A FOGGY DAY

(AS PERFORMED BY MICHAEL BUBLE)

GEORGE AND IRA GERSHWIN

♩ = c.150 

[illegible][illegible]

17 B 8 C 8 D *mp* *fp*

36

4

E

mf CRESC.

44

44

48

F LONG FALL

ff *mp*

53

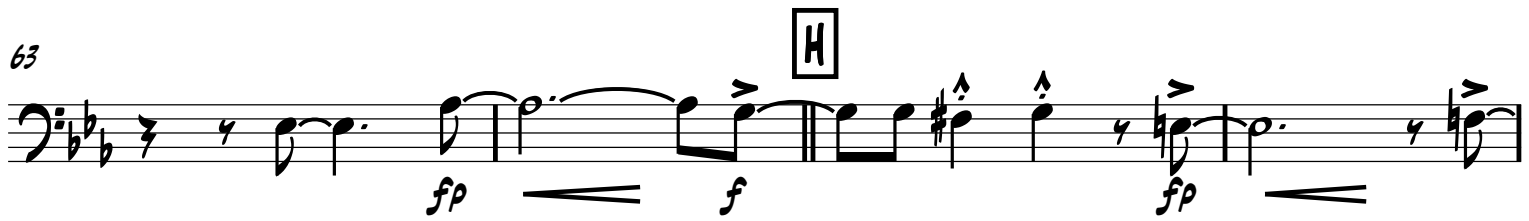
5

BASS TROMBONE
2

58



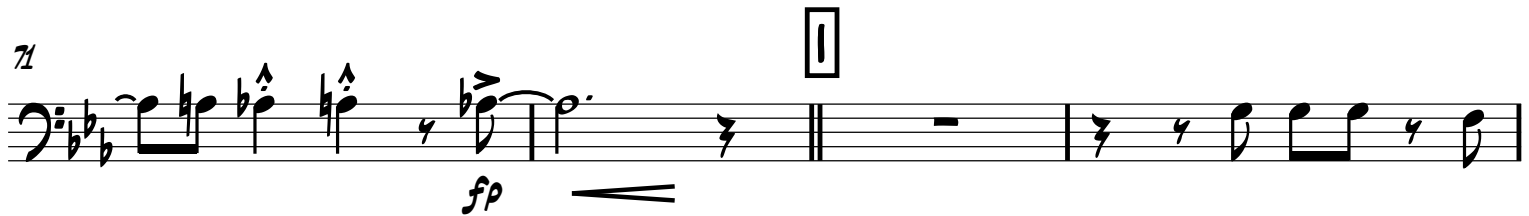
63



67



71



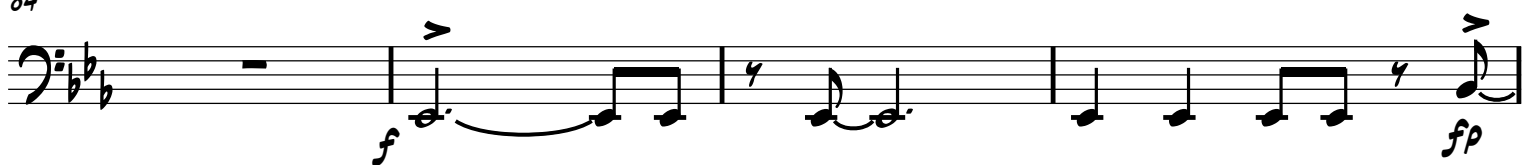
75



80

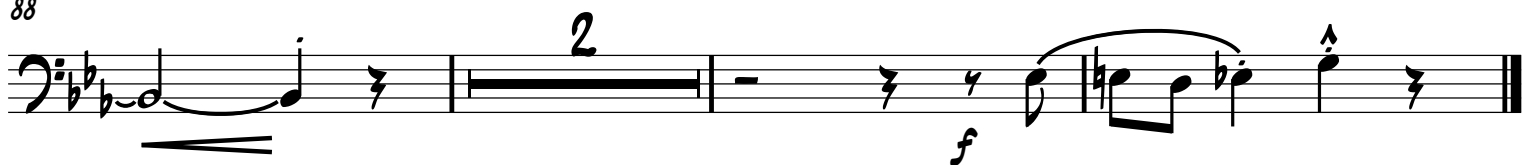


84



88

OFF ON 3



A FOGGY DAY

(AS PERFORMED BY MICHAEL BUBLE)

♩ = c.150 ♩ = $\overbrace{\text{♩} \text{♩} \text{♩}}^3$

1 *ff* G^b7 $F7$ $E7$ $E7$ E^b9 A^b13

5 $C7$ $B7$ D^b7 E^bM11 E^bM7/A^b

9 **A** D^b6 (FILL BEHIND VOCAL) $E7$ E^bM7 A^b13 *mp*

13 D^b6 B^bM7^b5 E^b7 A^b9

17 **B** F^bM7 A^bM6 D^b7 G^bMA^b7 C^b9

21 D^bMA^b7 B^b9 $B^b7(b9)$ E^b9 A^b9

25 **C** D^b6 $E7$ E^bM7 A^b13

29 D^b6 B^bM7^b5 E^b7 A^b9

PIANO/GUITAR
2

33 **D** $A^b M^7$ $D^b 7(b9)$ $G^b 6$ $C^b(b5)$

37 D^b/A^b $B^b M^7$ $E^b 9$ $E^b M^7/A^b$ $A^b 9$

41 **E** $F M^7$ $F M^7/B^b$ $E^b M A T^9$

mp cresc.

2 2

49 **F** $G^b 9$ $F M^7$ $B^b 9$

53 $E^b 6$ $C M^7 b5$ F^9 $B^b 9$

57 **G** E^b/G $E^b 7$ $A^b 6$ $D^b 9$

mf

61 $E^b 6$ $D^b 7(b5)$ $G^b 9/C$ F^9 $B^b 7 AUG$ $E^b 6$

65 **H** D^6 $E^b 6$ $G^b 9$ $F M^{11}$ $E M^{11}$ $F M^{11}$ $B^b 7$ $E^b 6$

PIANO/GUITAR 3

69 D^6 E^b6 C_M7^b5 A^b6 C_M7^b5 F^9 E^9 F^9 B^b7_{AUG}

73 E^b6 E^b7 A^b6 D^b9

77 E^b6 E^b/D $D^b_{MAJ}9$ C_M7 B^b_M7

81 E^b/G F_M^{11} F_M7 F_M7/B^b

85 E^b A^b/E^b E^b A^b/E^b B^b7 OFF ON 3 **SOLO** 8^{va}

89 **STRAIGHT** E^b E D E^b

BASS

A FOGGY DAY

(AS PERFORMED BY MICHAEL BUBLE)

GEORGE AND IRA GERSHWIN

♩ = c.150 ♩=♩♩

ff

6 D^b7 E^b_{M11} E^b_{M7}/A^b **A** D^b6 $E7$

11 E^b_{M7} A^b_{13} D^b6 B^b_{M7b5} E^b7

16 A^b9 **B** F_{M7} A^b_{M6} D^b7 G^b_{MAT7} C^b9

21 D^b_{MAT7} B^b9 $B^b7(b9)$ E^b9 A^b9 **C** D^b6

26 $E7$ E^b_{M7} A^b_{13} D^b6 B^b_{M7b5}

31 E^b7 A^b9 **D** A^b_{M7} $D^b7(b9)$ G^b6

36 $C^b(b5)$ D^b/A^b B^b_{M7} E^b9 E^b_{M7}/A^b A^b9

41 **E** F_{M7} F_{M7}/B^b E^b_{MAT9}

mp CRESC.

BASS
2

49 **F** $G^{\flat 9}$ F_M^7 $B^{\flat 9}$ $E^{\flat 6}$

54 $C_M^7 \flat 5$ F^9 $B^{\flat 9}$ **G** E^{\flat}/G $E^{\flat 7}$
mf

59 $A^{\flat 6}$ $D^{\flat 9}$ $E^{\flat 6}$ $D^{\flat 7}(\flat 5)$ $G^{\flat 9}/C$ F^9

64 $B^{\flat 7} AUG$ $E^{\flat 6}$ **H** D^6 $E^{\flat 6}$ $G^{\flat 9}$ F_M^{11} E_M^{11} F_M^{11} $B^{\flat 7}$
f

68 $E^{\flat 6}$ D^6 $E^{\flat 6}$ $C_M^7 \flat 5$ $A^{\flat 6}$ $C_M^7 \flat 5$ F^9 E^9 F^9 $B^{\flat 7} AUG$

73 **I** $E^{\flat 6}$ $E^{\flat 7}$ $A^{\flat 6}$ $D^{\flat 9}$ $E^{\flat 6}$ E^{\flat}/D

78 $D^{\flat} MAJ^9$ C_M^7 $B^{\flat}_M^7$ E^{\flat}/G F_M^{11}

83 F_M^7 F_M^7/B^{\flat} E^{\flat} A^{\flat}/E^{\flat} A^{\flat}/E^{\flat} $B^{\flat 7}$
f

88 OFF ON 3 2 E^{\flat} E D E^{\flat}
f

DRUMS

A FOGGY DAY

(AS PERFORMED BY MICHAEL BUBLE)

GEORGE AND IRA GERSHWIN

♩ = c.150 ♩ = ♩[♯]

STICKS

SET UP



5

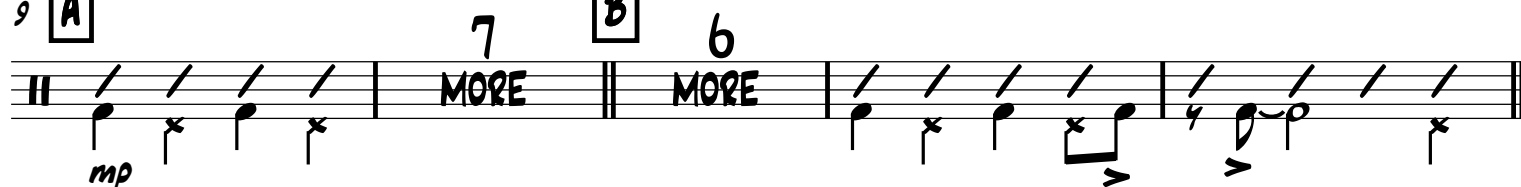
BRUSHES



9

A

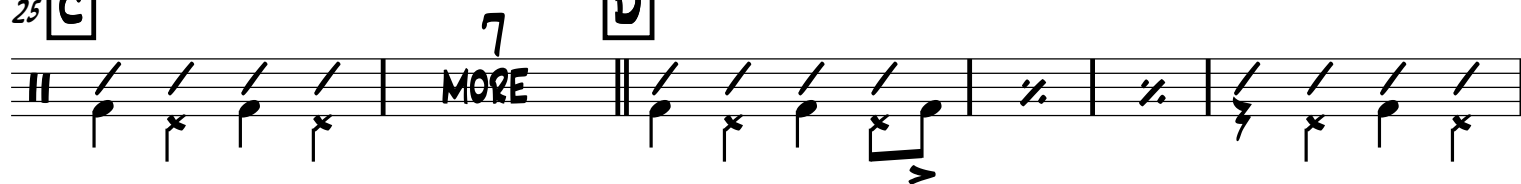
B



25

C

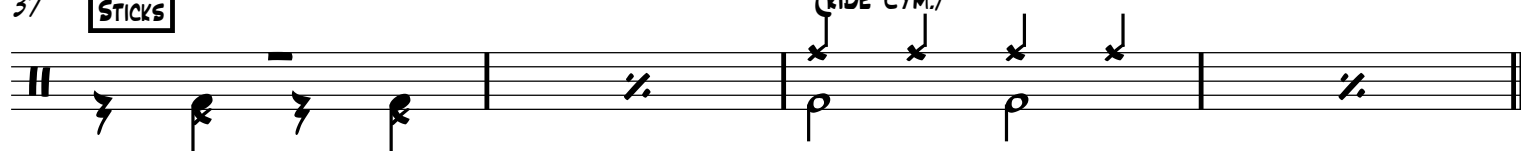
D



37

STICKS

(RIDE CYM.)



41

E

RIMSHOT

6
MORE

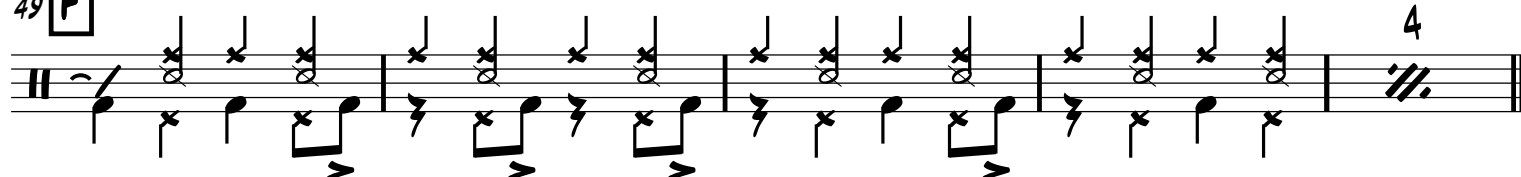
FILL



49

F

4



DRUMS
2

57 **G** **5** **SET UP** **H**

mf *f*

MORE

66 **SET UP** **2**

73 **I**

76 **2**

81 **SET UP**

85 *f*

88 **2** **FILL** **BARS** **TACET** *f*